



WorkSpace and Active Intelligence

WorkSpace™ provides users with a single interface to all aspects of the OneOffice application suite.

Active Intelligence™ identifies and delivers to users information held in OneOffice and elsewhere based on the nature of the tasks each user is working on.

Key Features at a Glance

- A single user interface to all aspects of OneOffice
- Intuitive, flexible use of screen real estate
- Fast easy access to information and records
- Provides additional information customised to the role of each user
- Unique Active Intelligence capability

Benefits

- Active Intelligence offers improved productivity by presenting users with additional relevant information in ensuring that you can get the most out of every opportunity
- WorkSpace is both intuitive and easy of use reducing training costs and improving effectiveness
- Single system approach avoids the cost and risks of integrating several disparate systems.
- Dashboards are straightforward to build and customise

WorkSpace and Active Intelligence are part of Strategix OneOffice, a single application combining ERP, CRM, Supply Chain Event Management (SCEM) and Supply Chain Management (SCM).

Active Intelligence™ (patent pending) is a capability unique to OneOffice that monitors business processes along with user activity and delivers information to users at the moment when it is of value to them.

WorkSpace

Using this single common desktop across the full range of business processes that can be managed through OneOffice simplifies training, improves efficiency and reduces the cost of managing multiple systems.

The facilities within WorkSpace include:

- A single window providing access to all the OneOffice programs
- Designed to optimise user ergonomics with an intuitive and flexible use of screen real estate, plus quick direct access to information and records.
- 'Explorer' style menu system ensures that any OneOffice program is only a few clicks away.
- User customisable 'Favourites' Menu for fast access to commonly used programs.
- A single pane for creating, viewing and editing notes.

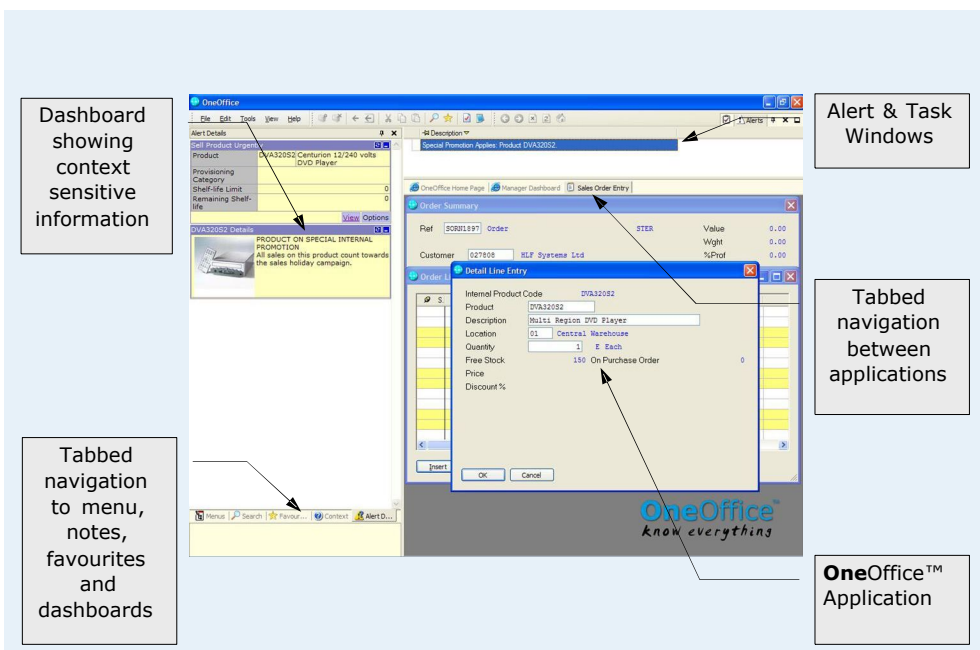


Figure 1. WorkSpace provides a straightforward and initiative way for people to navigate and use OneOffice. Active Intelligence helps users make the most out of every opportunity.



- Simple tabbed windows for quick navigation between active OneOffice programs.
- An embedded web browser to display information delivered via intranet, internet and from the OneOffice Business Intelligence Portal
- Alert pane displaying alerts, with the facility for users to sort and manage alerts in different ways.
- Task pane displaying tasks for the user, with the facility for users to sort and manage tasks in different ways.
- WorkSpace panes can 'auto-hide' or be 'pinned' in place and resized at will enabling users to select the optimal configuration of available screen space for their needs.
- Extensible architecture to support the introduction of new features into WorkSpace

- Optimised for Windows XP.

Active Intelligence

Active Intelligence is a capability unique to Strategix OneOffice. It is a new, patent pending technology which replaces the traditional rigid procedural approach used in business software of passively capturing and storing data with a new approach that ensures users see the information they require to make timely and informed decisions, just when they need it.

Active Intelligence uses a component called a Contextual Co-Processor to determine the nature of the tasks each user is currently working on and then to assist them by providing additional, relevant and timely information. For example, if a user is working on Product X and Customer Y, then the Contextual Co-Processor can identify and deliver additional information to the user for that

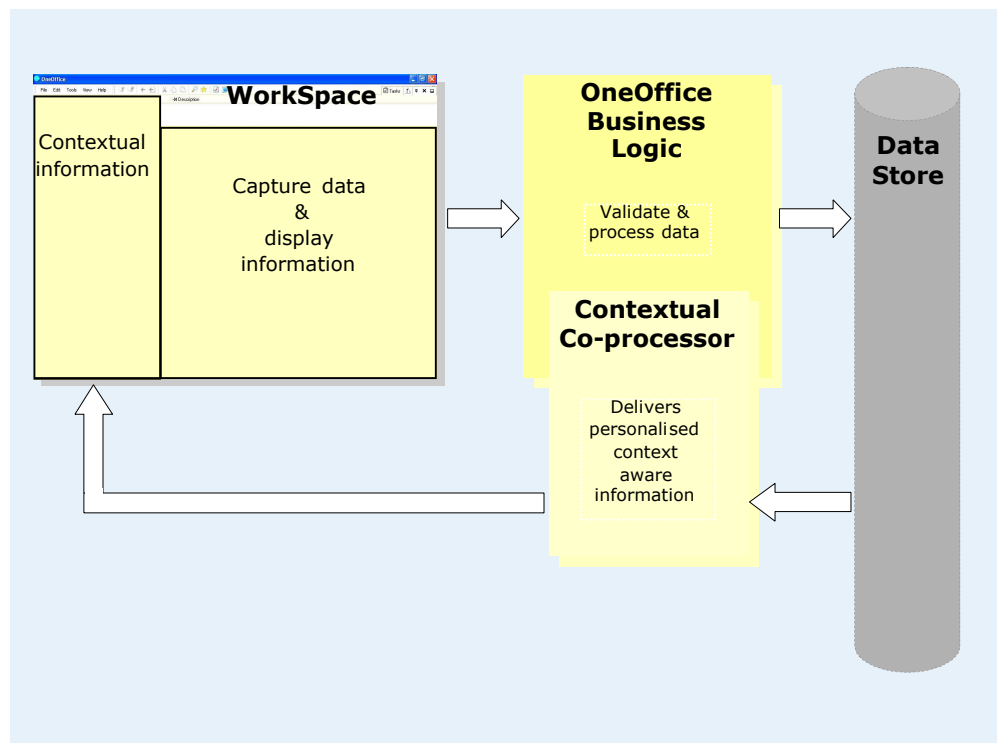


Figure 2. Active Intelligence— the Contextual Co-Processor monitors and interprets the tasks a user is working on and displays additional, relevant information to help them make well informed and timely decisions.



Customer/Product combination; the user can also elect to see other apparently unrelated but relevant information.

This straightforward, flexible approach ensures that users have the information they need to make well informed decisions just when they need it. This reduces the learning curve for new starters while maximising efficiency, customer satisfaction and most importantly revenue. Active Intelligence is currently only available with OneOffice.

Business Process Monitoring

The Business Process Monitoring capability embedded in OneOffice identifies events as they happen and passes key information to the Alert Manager.

Using a series of mapped processes the Alert Manager analyses information about each event, identifies the type of event and determines when/if a user needs to be informed. Where appropriate, details of the event are passed to the Workflow Engine for onward delivery to the users.

This combination of 'push' and 'pull' technologies ensures that users are not flooded with information every time an event is detected, they only receive information about key events that are relevant to them and their role.

Individual events are categorised into 'Tasks' and 'Alerts'.

OneOffice can automatically generate 'Tasks' at the point in a process where user intervention is required. For example approving a purchase order prior to the order being placed with a supplier. When

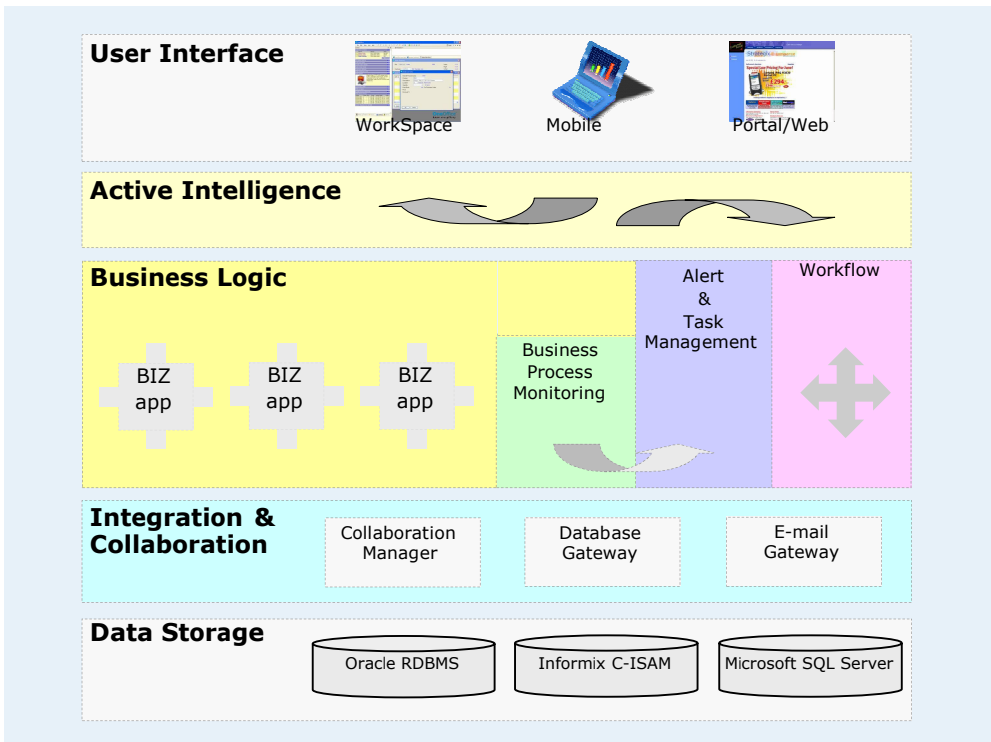


Figure 3. OneOffice Schematic—Multi-Tier Architecture. OneOffice is a component based software application enabling organisations to select and evolve the best system to suit their needs.



a Task has been completed it is actively removed from the Task list of all the users it was originally sent to.

'Alerts' are displayed only when they are relevant to the task a user is currently working on. For example if a user is generating a quotation for customer 'A' and product 'B', then an Alert showing existing quotations for the same customer/product combination could be displayed. An Alert ceases to be displayed when it is no longer relevant to the context of a user's current work.

Each time a user logs on to WorkSpace, a list of current Tasks and relevant Alerts is displayed. As new tasks are received for the user, they are sorted and re-sorted into a priority order and displayed in the task window for the user to work on. To help the user decide which activity to work with first, a line of summary information is displayed for each task in the task pane.

As the user reviews and works on each task they can drill directly from the task to related records in the OneOffice database. As the user 'drills' into a record, WorkSpace launches the correct OneOffice program and displays the information.

For example, if a user is sent a task to authorise a purchase order, just by clicking on the task summary, the purchase order is displayed, the user can authorise the purchase order, this in turn completes the original task and as a result the task is removed from the user's list.

Unified WorkSpace

This unique approach to displaying and managing information across all your business processes delivers a number of important benefits including:

- presenting everything your users need to know in a single, easy to use, interface
- providing information so you can deliver better customer service and maximise selling opportunities
- avoiding the cost, risk and delay of integrating several disparate systems
- reducing training costs and gaining from greater employee satisfaction
- achieving 360° visibility across your business leading to increased productivity and profitability

strategis

Official OneOffice reseller for Australia & New Zealand

Strategis Solutions Ltd

www.strategisanz.com

Melbourne

Gary Park

Phone: 03 9724 0734

Email: gpark@strategisanz.com

Auckland

Mike Carroll

Phone: 09 521 0724

Email: mcarroll@strategisanz.com